

# Learning, academic & campus management system for schools

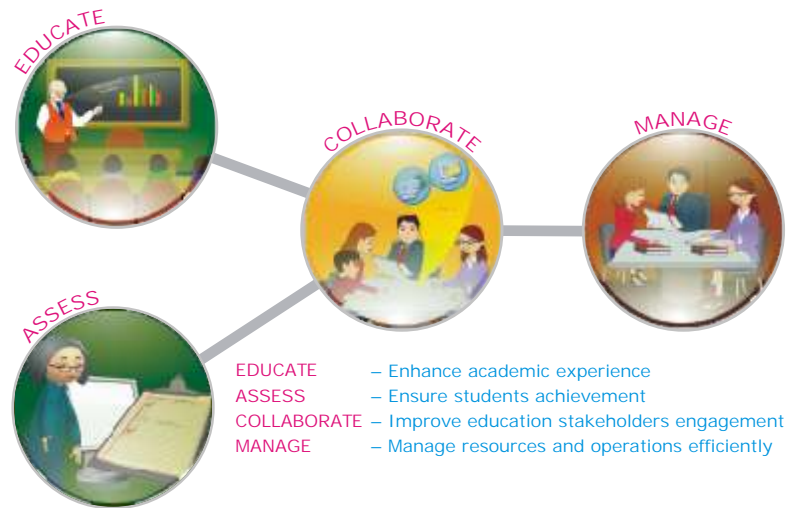


Link2School is an easy-to-use web-based learning, academic and campus management system for schools. It provides best in class content management system, learner-centered learning management system and comprehensive assessment tools with all backend administration functions of the institution to increase the overall effectiveness of the institution. Its real-time collaborative platform helps connect and bridge the gap between all education stakeholders: students, teachers, parents and administrator.

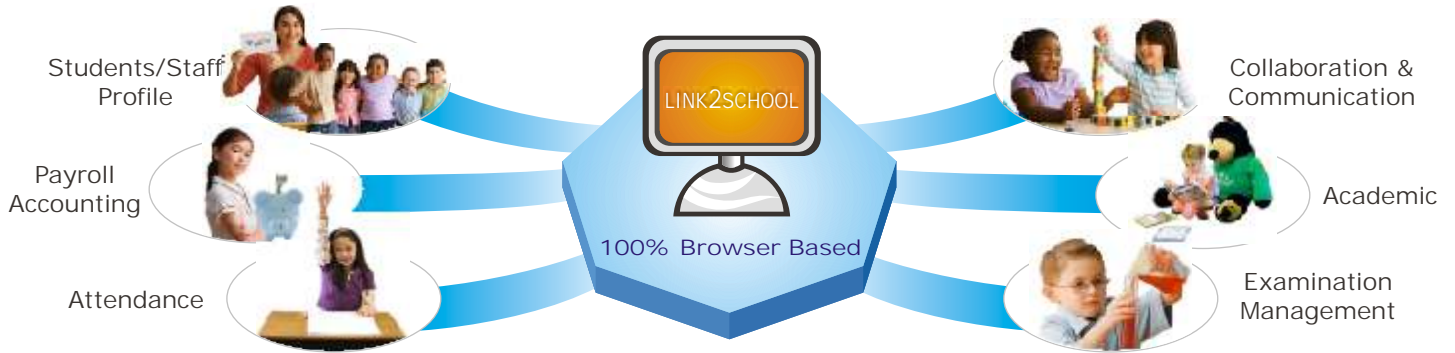
Its integrated structure, modules and core database engine helps avoid redundancy of data and duplication of work, thus resulting in efficient use of time, resources and cost. Behind the scene it enhances all the learning, teaching, academic and administrative activities, and simplifies the complexities of today's educational challenges by providing an enhanced online academic experience, ensuring students' achievement, improving education stakeholders engagement and managing resources and operations efficiently.

## Features

- Secure, scalable and robust platform
- Flexible and customizable to suit individual institutions' needs
- Connect all education stakeholders: Teachers, administrators, students and parents
- Effective management of students and staffs records
- Meet diverse assessment needs of the school
- Impeccable automation of academic and administrative functions
- Integration key functions of finance, payroll and fee collection



- Grade book to track students' progress and performance
- Facility to intimate notices, events, holidays, etc., easily and quickly
- Support for RFID Tags, Smart Cards, Biometrics, Mobile – SMS/Text/IM and Barcode
- Anytime, anywhere access – Internet or Intranet



To suit the specific requirements of individual schools, Link2School is offered in 6 different edition

### 1. Link2School Learn

SCORM/AICC based learning management to use existing or off-the-shelf standard content and courses.

LINK2SCHOOL		
LEARN PRO	LEARN	Category Management
		Course Administration
		Approvals
		User Management
		Reports
		Miscellaneous
		Collaboration Tools
		Content Management
		Assessment
		E-Book
EDUSUITE	Campus STAFFE	Content Preparation
		Question Bank Authoring
		School profile
		Staff profile
		Student profile
		Class Profile
		Attendance
		Fees
		Examination
		Utility
CAMPUS LIVE	CAMPUS SMART	Reports
		Scheduling
		Accounts
		Library
		Academic
		Student Live
		Faculty Live

### 2. Link2School Learn PRO

Learning and content management system that provides all the features and functionalities of Link2School Learn along with content and question authoring, content management, etc.

### 3. Link2School Campus STAFFE

Simple and user-friendly school management system that automates and integrates schools key functions such as school/students/staff profile, attendance, facility, fees and examination management.

### 4. Link2School Campus SMART

Comprehensive campus management system specifically developed for K-12 schools to cater to the needs of today's challenges in the educational environment by providing an enhanced online academic experience.

### 5. Link2School Campus LIVE

Highly cohesive and collaborative system that connects and bridges gap between all education stakeholders: parents, teachers, and students.

### 6. Link2School EduSuite

Complete academic and campus management system that securely manages and optimizes all the operations of the school more effectively and efficiently.



Tel: +91 44 4215 0202 (India)  
 Tel: +1-845-510-2999 (USA)  
 Fax: +91 44 2561 2512  
 E-mail: info@whitehouseit.com  
 Website: www.whitehouseit.com